

Student Success Scorecard

Results for the
Los Angeles Community Colleges
From the March 2013 Report

Maury Pearl,
Associate Vice Chancellor for
Institutional Effectiveness



Student Success Scorecard

- In 2013, ARCC (Accountability Reporting for the Community Colleges) was replaced by the Student Success Scorecard
- The Scorecard was included in the Student Success Task Force recommendations as Recommendation 7.3
- Scorecard measures are based on different methodology and include more detail. Measures are disaggregated by:
 - Student preparation
 - Age, gender, and ethnicity

Scorecard Measures

- **Completion Rate (Prepared and Unprepared)**
- **At Least 30 Unit Completion (Prepared and Unprepared)**
- ***Persistence Rate (Prepared and Unprepared)***
- **Remedial Progress Rate (Math, English, and ESL)**
- **Career Technical Education (CTE) Completion Rate**
- ***Career Development & College Preparation (CDCP) Completion Rate***

Comparison Groups

- Statewide (110 colleges providing data)
- Multi-College Urban (7 colleges- Peralta and San Diego Districts)
 - Alameda, Berkeley, Laney, Merritt, San Diego City, San Diego Mesa, San Diego Miramar
- Surrounding Districts (11 colleges)
 - Canyons, Cerritos, Compton (El Camino Compton Center), El Camino, Glendale, Long Beach, Moorpark, Mt. Sac, Pasadena, Rio Hondo, Santa Monica

Completion Rate

Outcome: Degree, Certificate, Transfer, or Transfer Prepared with 6 years

Prepared:
First math or English course is college level

Unprepared:
First math or English course is below college

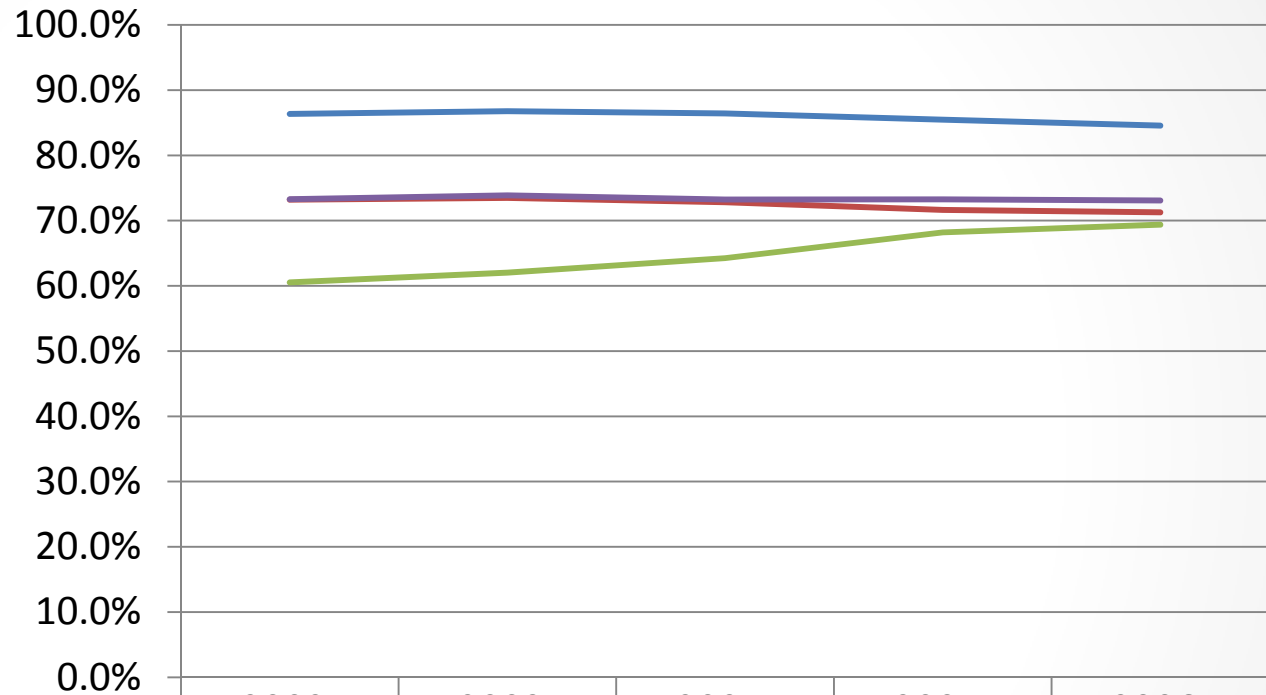
Cohort: New, first-time students, who within 3 years:

Completed at least 6 units AND

Attempted any English or Math

Unprepared Students

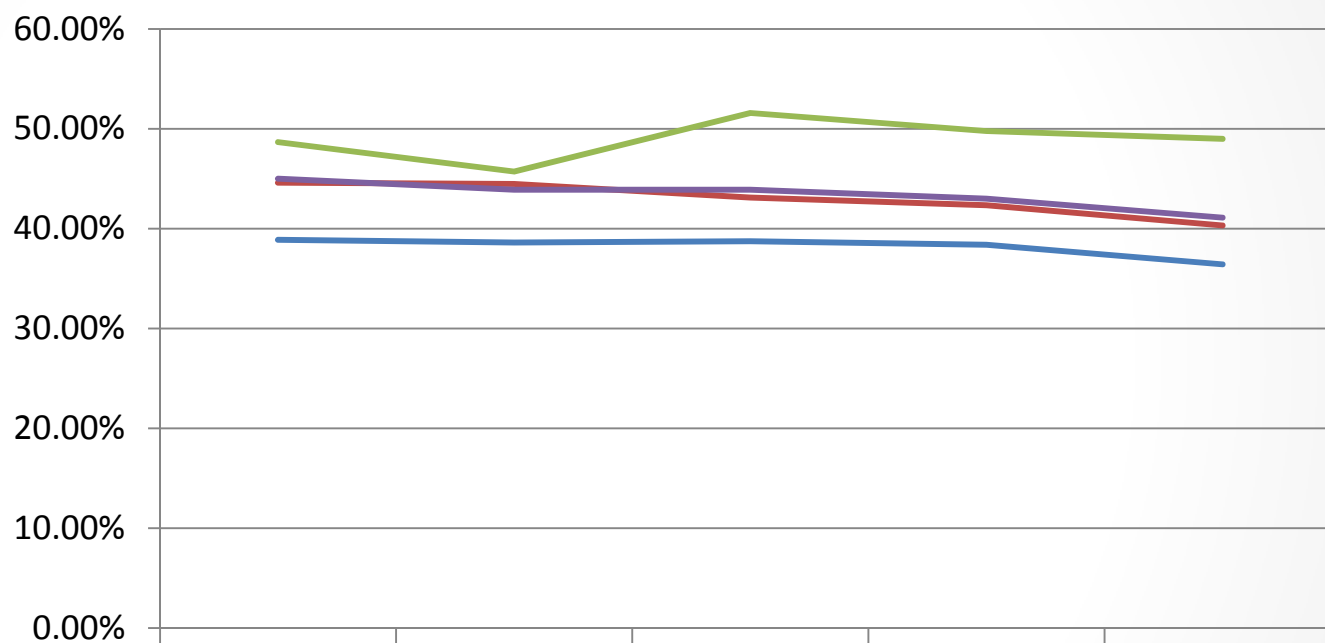
Percentage of Unprepared Students



	2002-2003	2003-2004	2004-2005	2005-2006	2006-2007
(1) LACCD Average	86.4%	86.8%	86.4%	85.5%	84.5%
(2) Surrounding Districts	73.2%	73.5%	72.8%	71.6%	71.3%
(3) Multicollege Urban	60.5%	62.0%	64.2%	68.2%	69.4%
(4) Statewide	73.3%	73.9%	73.2%	73.3%	73.1%

Completion Rate

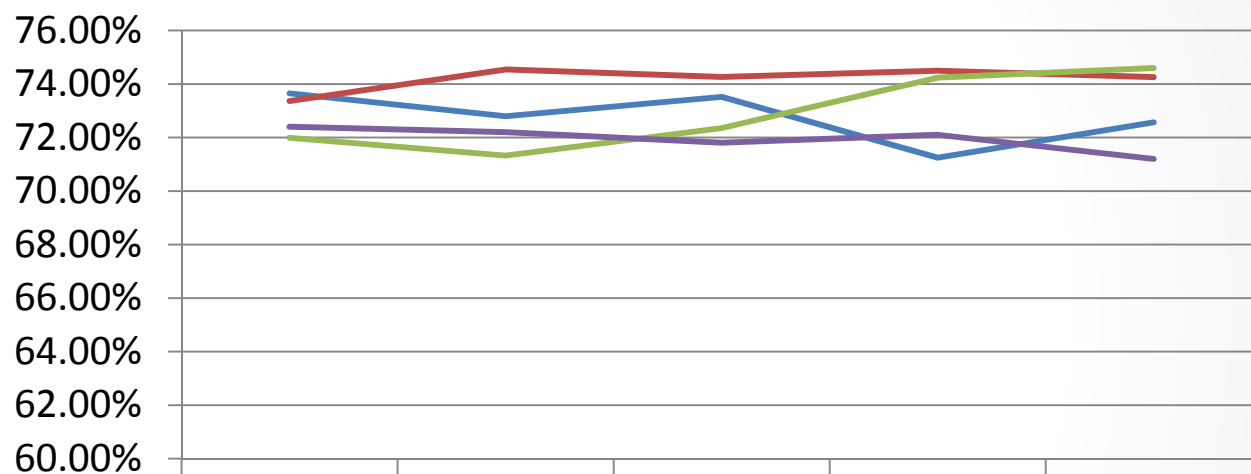
Completion: Unprepared



	2002-2003	2003-2004	2004-2005	2005-2006	2006-2007
(1) LACCD Average	38.87%	38.61%	38.74%	38.38%	36.42%
(2) Surrounding Districts	44.59%	44.47%	43.11%	42.34%	40.32%
(3) Multicollege Urban	48.67%	45.73%	51.59%	49.77%	48.99%
(4) Statewide	45.00%	43.90%	43.90%	43.00%	41.10%

Completion Rate

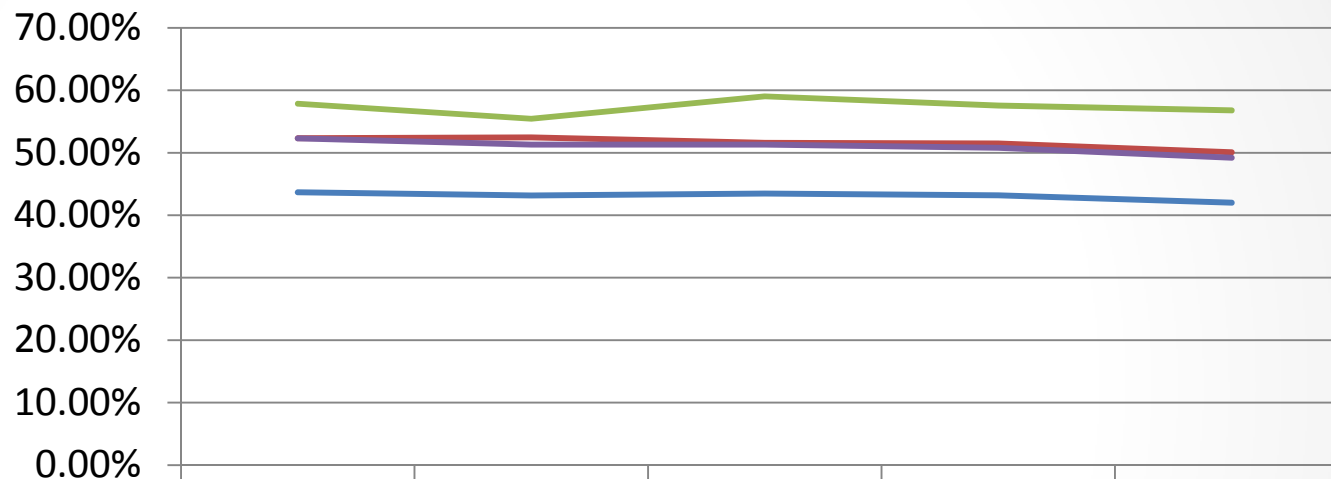
Completion: Prepared



	2002- 2003	2003- 2004	2004- 2005	2005- 2006	2006- 2007
— (1) LACCD Average	73.65%	72.79%	73.52%	71.24%	72.57%
— (2) Surrounding Districts	73.36%	74.54%	74.26%	74.49%	74.25%
— (3) Multicollege Urban	71.99%	71.33%	72.36%	74.24%	74.60%
— (4) Statewide	72.40%	72.20%	71.80%	72.10%	71.20%

Completion Rate

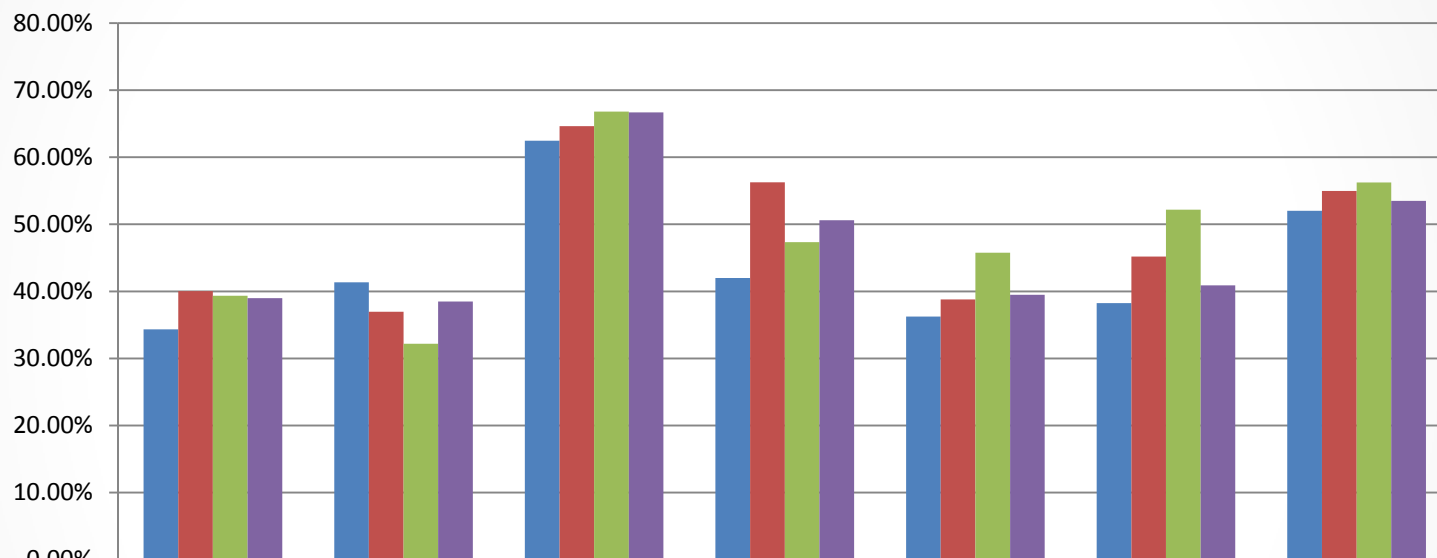
Completion: Overall



	2002- 2003	2003- 2004	2004- 2005	2005- 2006	2006- 2007
— (1) LACCD Average	43.67%	43.15%	43.46%	43.19%	41.99%
— (2) Surrounding Districts	52.32%	52.45%	51.57%	51.47%	50.08%
— (3) Multicollege Urban	57.86%	55.45%	59.03%	57.54%	56.79%
— (4) Statewide	52.30%	51.30%	51.30%	50.80%	49.20%

Completion Rate

Overall Completion by Ethnicity



	African American	American Indian/Alaskan Native	Asian	Filipino	Hispanic	Pacific Islander	White
■ (1) LACCD Average	34.34%	41.35%	62.46%	42.00%	36.26%	38.24%	52.01%
■ (2) Surrounding Districts	40.05%	36.97%	64.65%	56.27%	38.80%	45.18%	54.96%
■ (3) Multicollege Urban	39.34%	32.20%	66.81%	47.34%	45.76%	52.17%	56.23%
■ (4) Statewide	39.00%	38.50%	66.70%	50.60%	39.50%	40.90%	53.50%

At Least 30 Units Completion Rate

Outcome: Student earned at least 30 units in the California Community College system.

Prepared:
First math or English course is college level

Unprepared:
First math or English course is below college

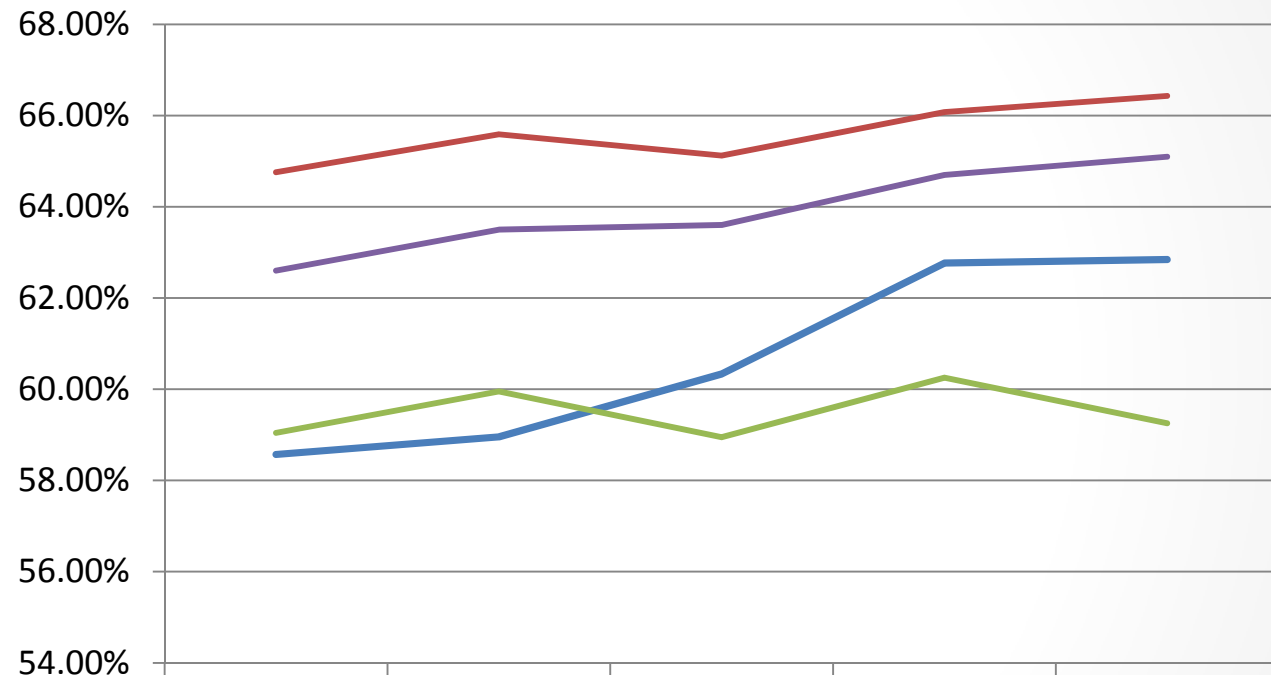
Cohort: New, first-time students, who within 3 years:

Completed at least 6 units AND

Attempted any English or Math

At Least 30 Unit Completion Rate

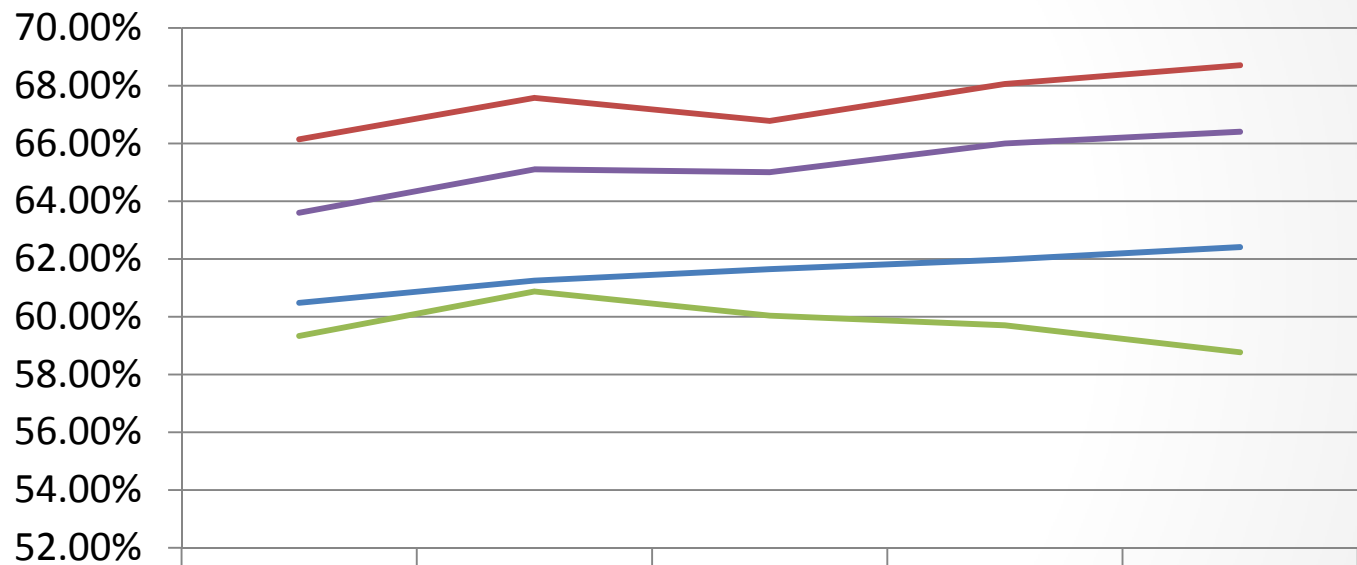
30 Unit Completion: Unprepared



	2002-2003	2003-2004	2004-2005	2005-2006	2006-2007
(1) LACCD Average	58.57%	58.95%	60.33%	62.76%	62.84%
(2) Surrounding Districts	64.76%	65.59%	65.12%	66.08%	66.43%
(3) Multicollege Urban	59.04%	59.95%	58.95%	60.25%	59.26%
(4) Statewide	62.60%	63.50%	63.60%	64.70%	65.10%

At Least 30 Unit Completion Rate

30 Unit Completion: Overall



	2002-2003	2003-2004	2004-2005	2005-2006	2006-2007
— (1) LACCD Average	60.48%	61.25%	61.64%	61.98%	62.41%
— (2) Surrounding Districts	66.14%	67.57%	66.78%	68.06%	68.71%
— (3) Multicollege Urban	59.33%	60.87%	60.04%	59.70%	58.77%
— (4) Statewide	63.60%	65.10%	65.00%	66.00%	66.40%

Remedial Progress Rate

Outcome: Successful completion of a college level course in same discipline within 6 years

Cohort: Students who start at any level below college in:

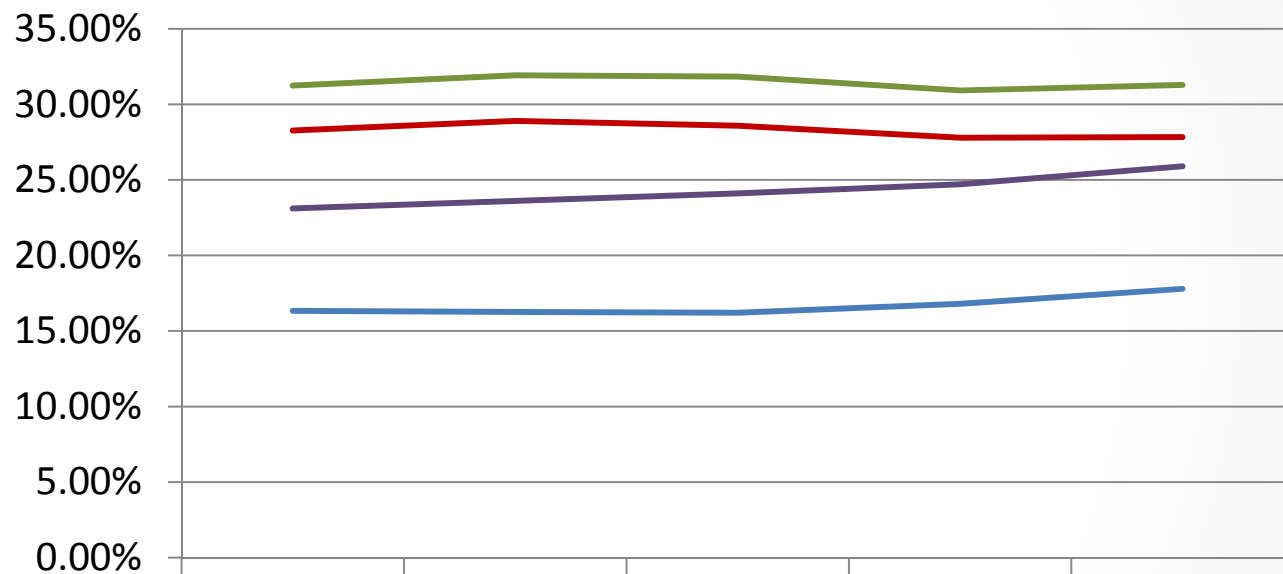
English

Math

ESL

Remedial Progress Rate

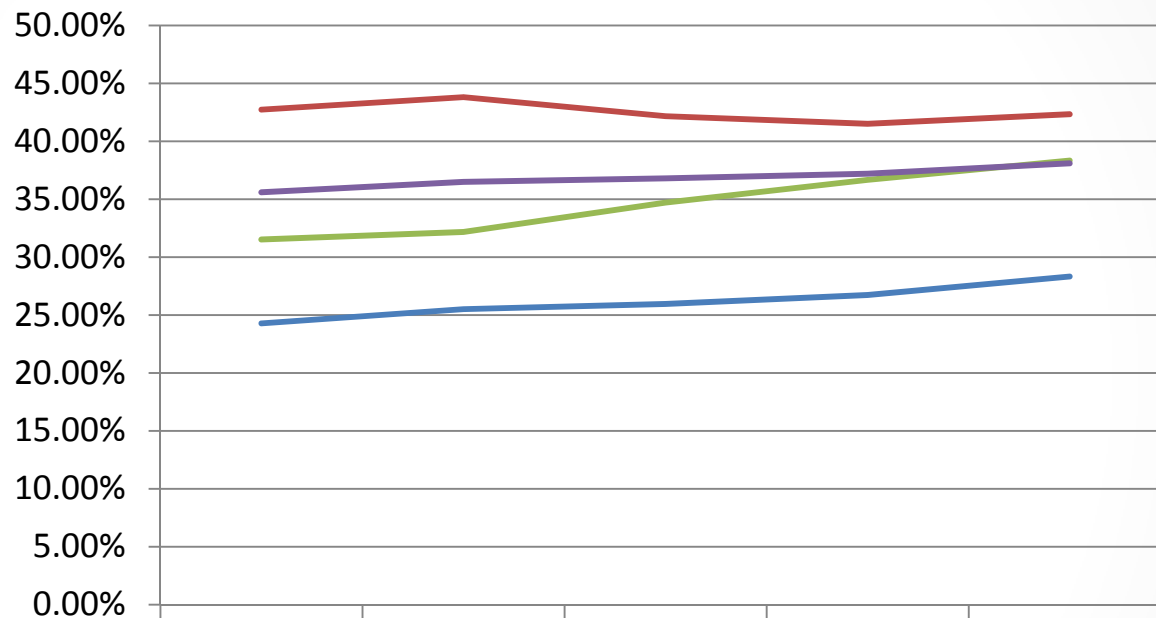
Remedial Progress: Math



	2002-2003	2003-2004	2004-2005	2005-2006	2006-2007
(1) LACCD Average	16.32%	16.26%	16.21%	16.80%	17.79%
(2) Surrounding Districts	28.26%	28.90%	28.58%	27.78%	27.83%
(3) Multicollege Urban	31.23%	31.91%	31.83%	30.91%	31.28%
(4) Statewide	23.10%	23.60%	24.10%	24.70%	25.90%

Remedial Progress Rate

Remedial Progress: English



	2002- 2003	2003- 2004	2004- 2005	2005- 2006	2006- 2007
— (1) LACCD Average	24.29%	25.52%	25.95%	26.72%	28.33%
— (2) Surrounding Districts	42.74%	43.82%	42.18%	41.50%	42.34%
— (3) Multicollege Urban	31.52%	32.17%	34.72%	36.68%	38.35%
— (4) Statewide	35.60%	36.50%	36.80%	37.20%	38.10%

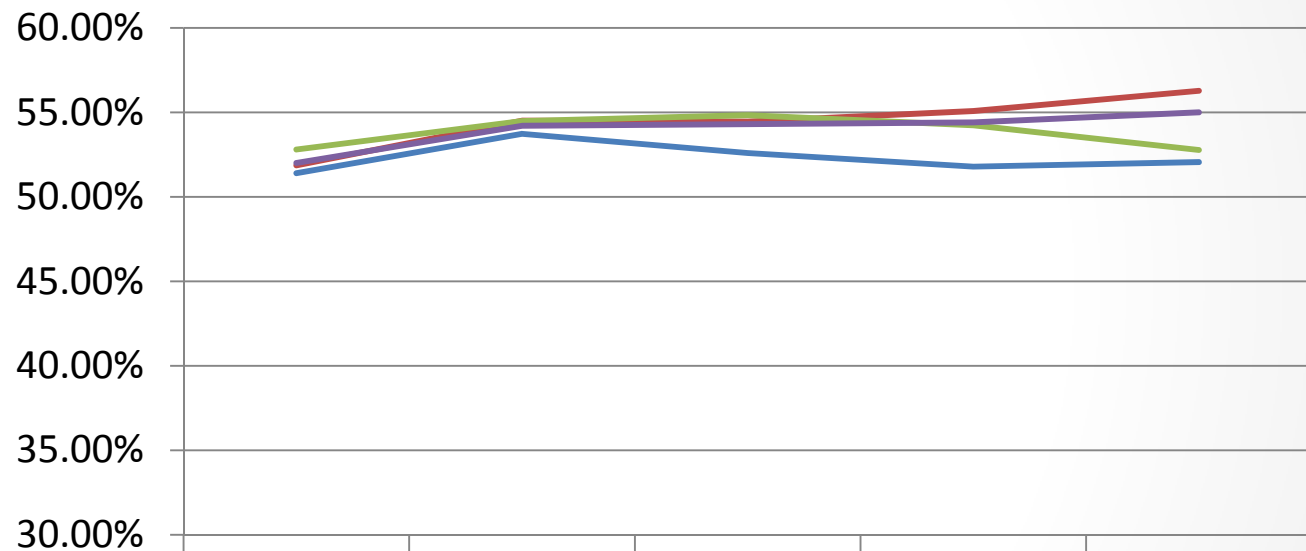
CTE Completion Rate

**Outcome: Degree, Certificate,
Transfer, or Transfer Prepared within
6 years**

**Cohort: Students completing a CTE course for the
first time and completing at least 8 units in the
same CTE discipline within three years**

CTE Completion Rate

CTE Completion



	2002-2003	2003-2004	2004-2005	2005-2006	2006-2007
— (1) LACCD Average	51.39%	53.72%	52.59%	51.79%	52.05%
— (2) Surrounding Districts	51.87%	54.50%	54.44%	55.07%	56.27%
— (3) Multicollege Urban	52.80%	54.49%	54.83%	54.23%	52.77%
— (4) Statewide	52.00%	54.20%	54.30%	54.40%	55.00%

Summary Progress Measures

Measure	Group	Change from Prior Year (Percentage Points)				Number of LACCD Colleges Having an:		
		LACCD Average	Surrounding Districts	Multi- College Urban	State	INCREASE	DECREASE	NO CHANGE OR NA
Completion	Overall	-1.3%	-1.4%	-0.8%	-1.6%	3	6	0
	Prepared	0.7%	-0.2%	0.4%	-0.9%	5	4	0
	Unprepared	-2.0%	-2.0%	-0.8%	-2.0%	2	7	0
At Least 30 Units Rate	Overall	0.0%	0.6%	-0.9%	0.4%	3	5	1
	Prepared	-0.2%	1.3%	-0.9%	0.4%	3	6	0
	Unprepared*	0.1%	0.4%	-1.0%	0.4%	4	5	0
Remedial Progress	Math*	1.0%	-0.1%	0.4%	1.2%	7	2	0
	English*	1.6%	0.8%	1.7%	0.9%	8	1	0
	ESL*	0.5%	0.3%	3.8%	0.7%	5	4	0
Career Technical Education (CTE)		0.2%	1.2%	-1.5%	0.6%	5	4	0

College Rank by Measure

Scorecard 2013	COMPLETION RATE (2006-07 cohort)		
	Rank Prepared	Rank Unprepared	Rank overall
Pierce	8	25	30
Harbor	55	71	70
Valley	60	90	85
East	43	68	87
West	97	91	97
City	93	99	103
Southwest	4	106	106
Mission	38	107	107
Trade-Tech	29	108	109
Average Rank	47	85	88
Out of	110	110	110
Quartile	2nd	4th	4th

College Rank by Measure

Scorecard 2013	AT LEAST 30 UNITS (2006-07 cohort)		
	Rank Prepared	Rank Unprepared	Rank overall
Pierce	45	13	22
East	82	42	52
Harbor	69	61	68
Valley	64	78	76
City	100	74	82
West	102	91	97
Mission	85	101	100
Trade-Tech	103	100	101
Southwest	107	109	108
Average Rank	84	74	78
Out of	110	110	110
Quartile	4th	3rd	3rd

College Rank by Measure

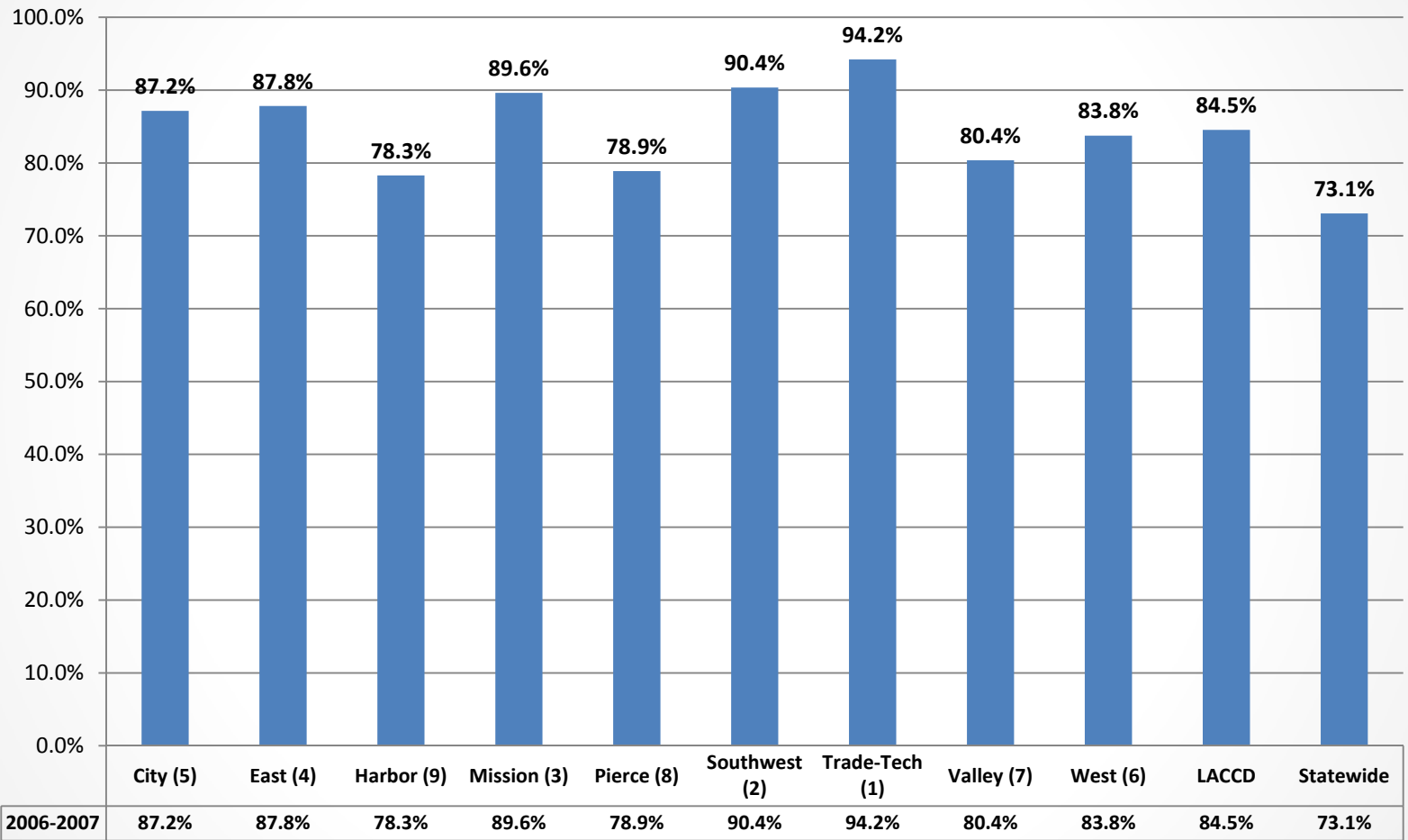
Scorecard 2013	REMEDIAL PROGRESS (2006-07 cohort)			CTE
	ENGLISH	MATH	ESL	
City	67	68	55	86
East	65	66	51	76
Harbor	81	47	28	8
Mission	72	67	97	78
Pierce	30	69	39	47
Southwest	100	106	93	21
Trade-Tech	102	104	95	94
Valley	56	94	35	42
West	89	97	56	109
Average Rank	74	80	61	62
Out of	108	107	102	110
Quartile	3rd	3rd	3rd	3rd

Findings and Conclusions

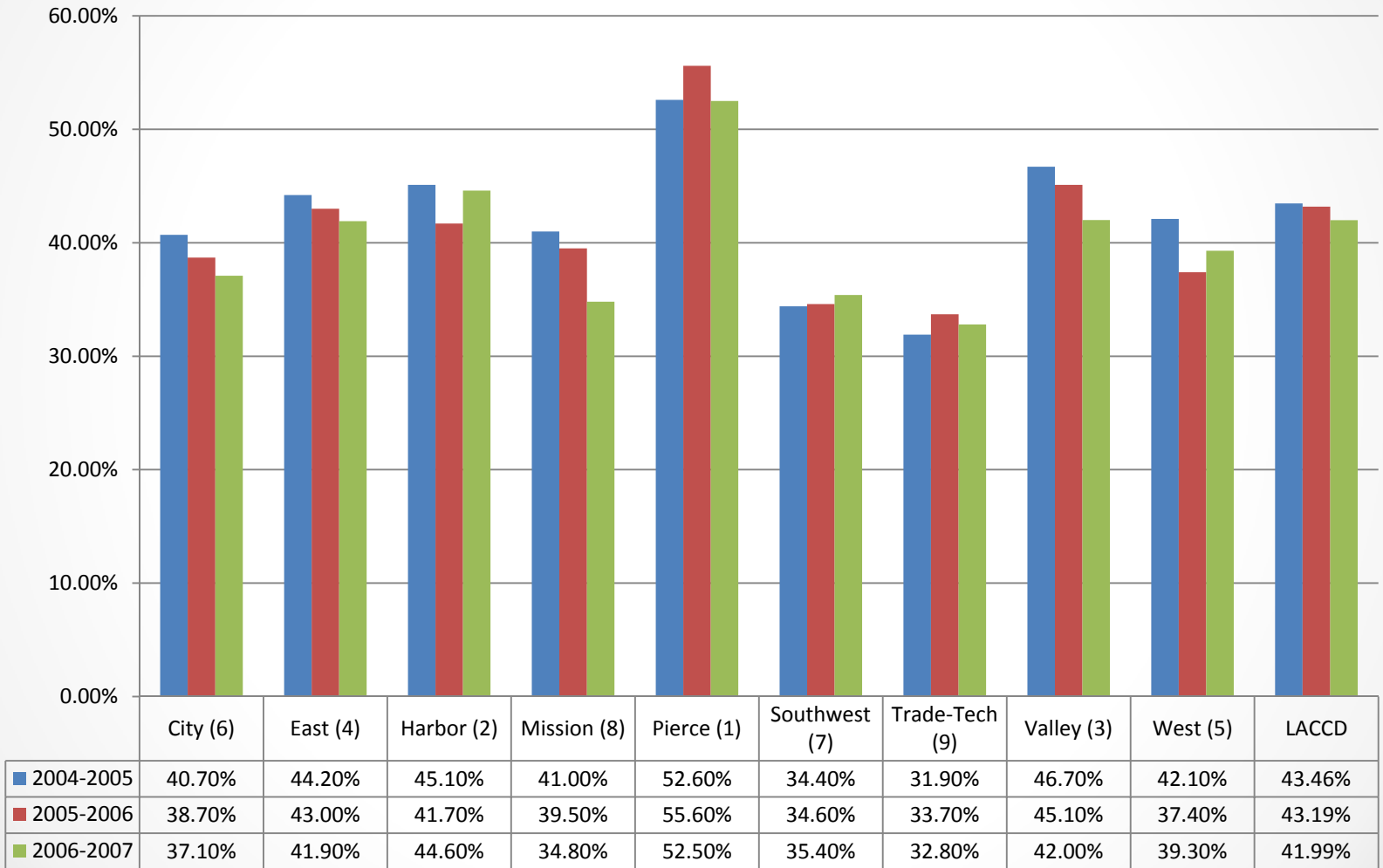
- *There are gaps in performance between the LACCD and other colleges*
- *There has been improvement in several key student success measures*
- *Reducing achievement gaps is an important component of improving overall Scorecard outcomes*
- *SB 1456, Achieving the Dream, and the District Strategic Plan provide the framework for improvements*

Data Appendix: College Measures

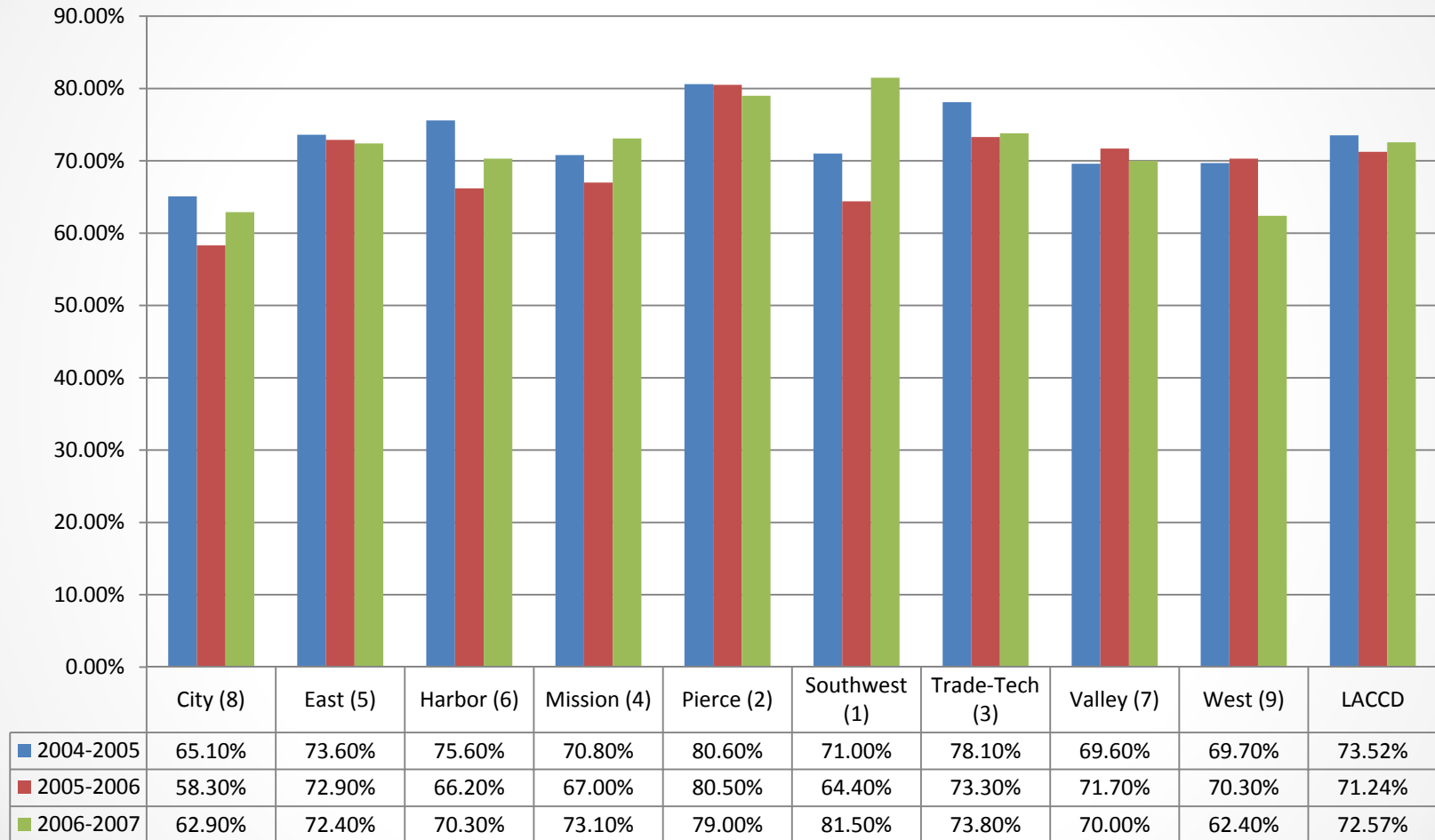
% Unprepared by College



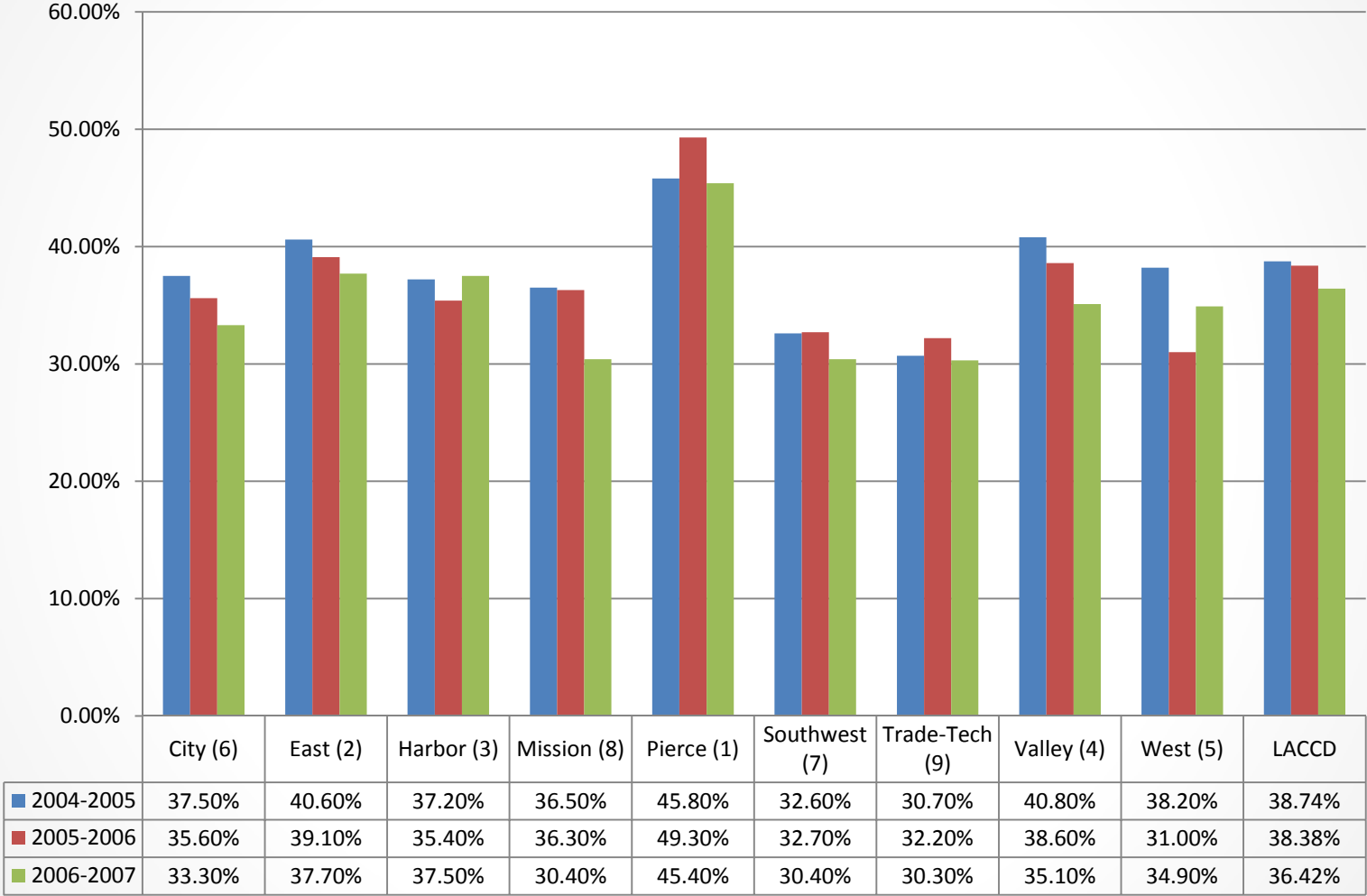
Completion by College: Overall



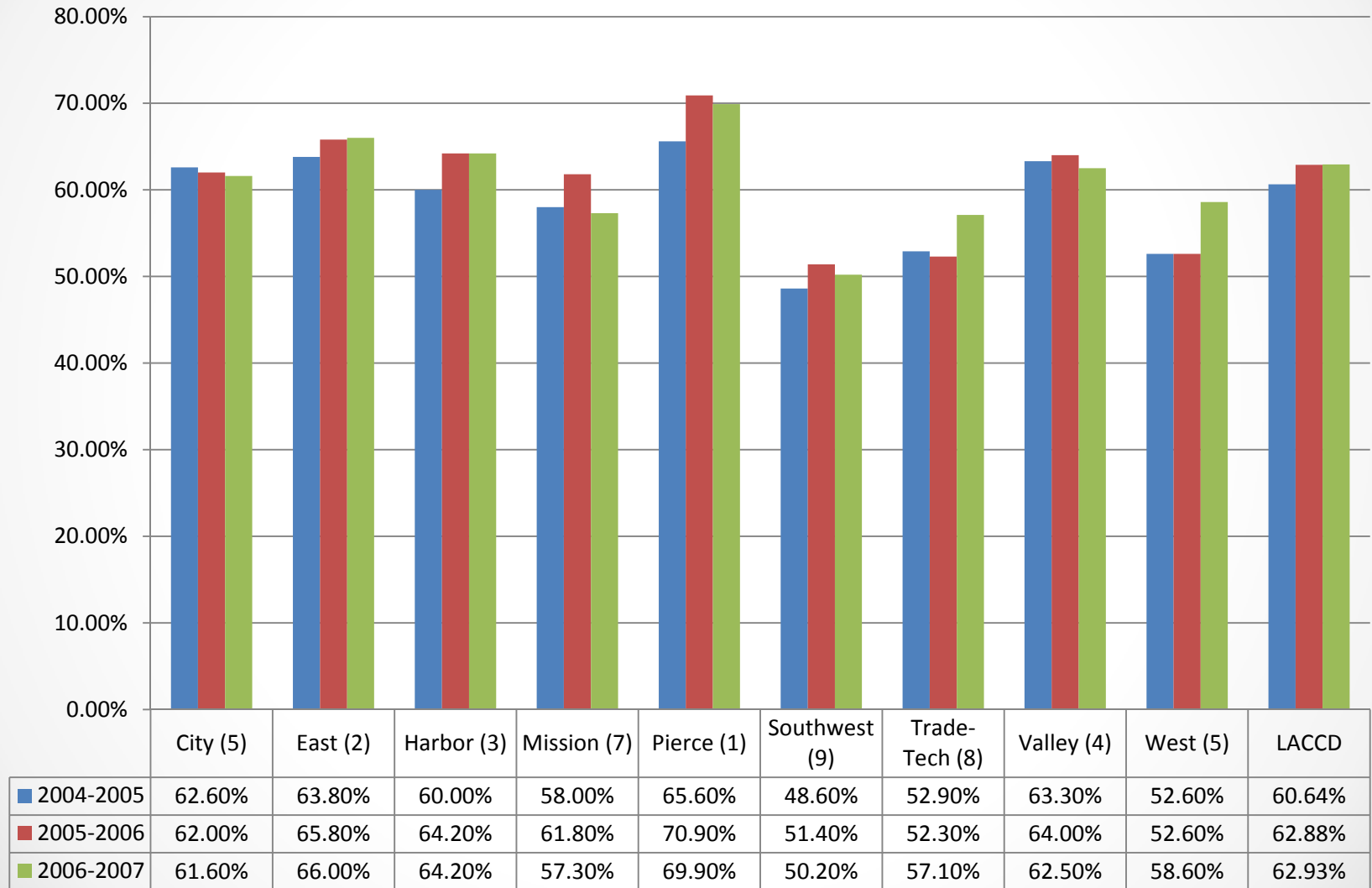
Completion by College: Prepared



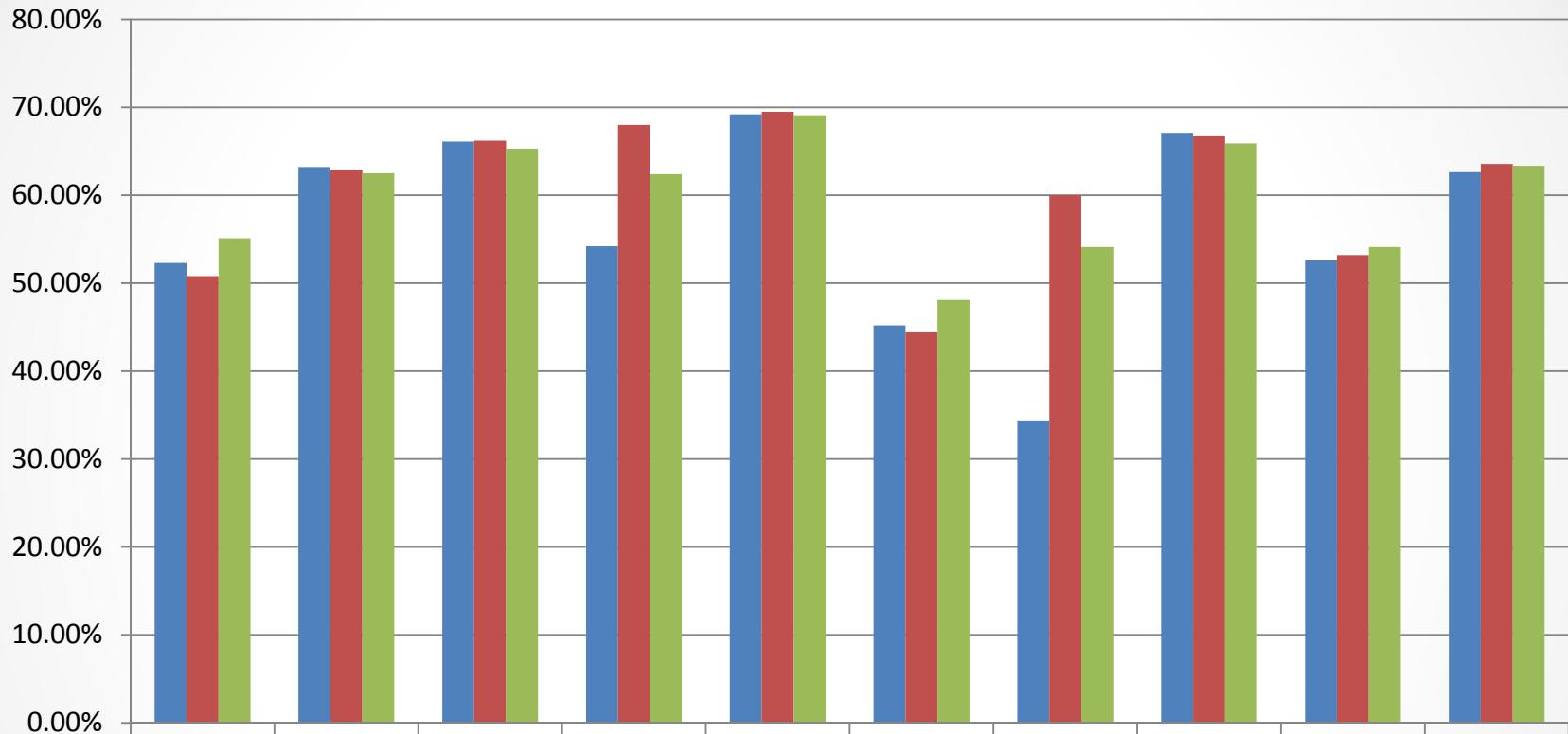
Completion by College: Unprepared



30 Units by College: Overall

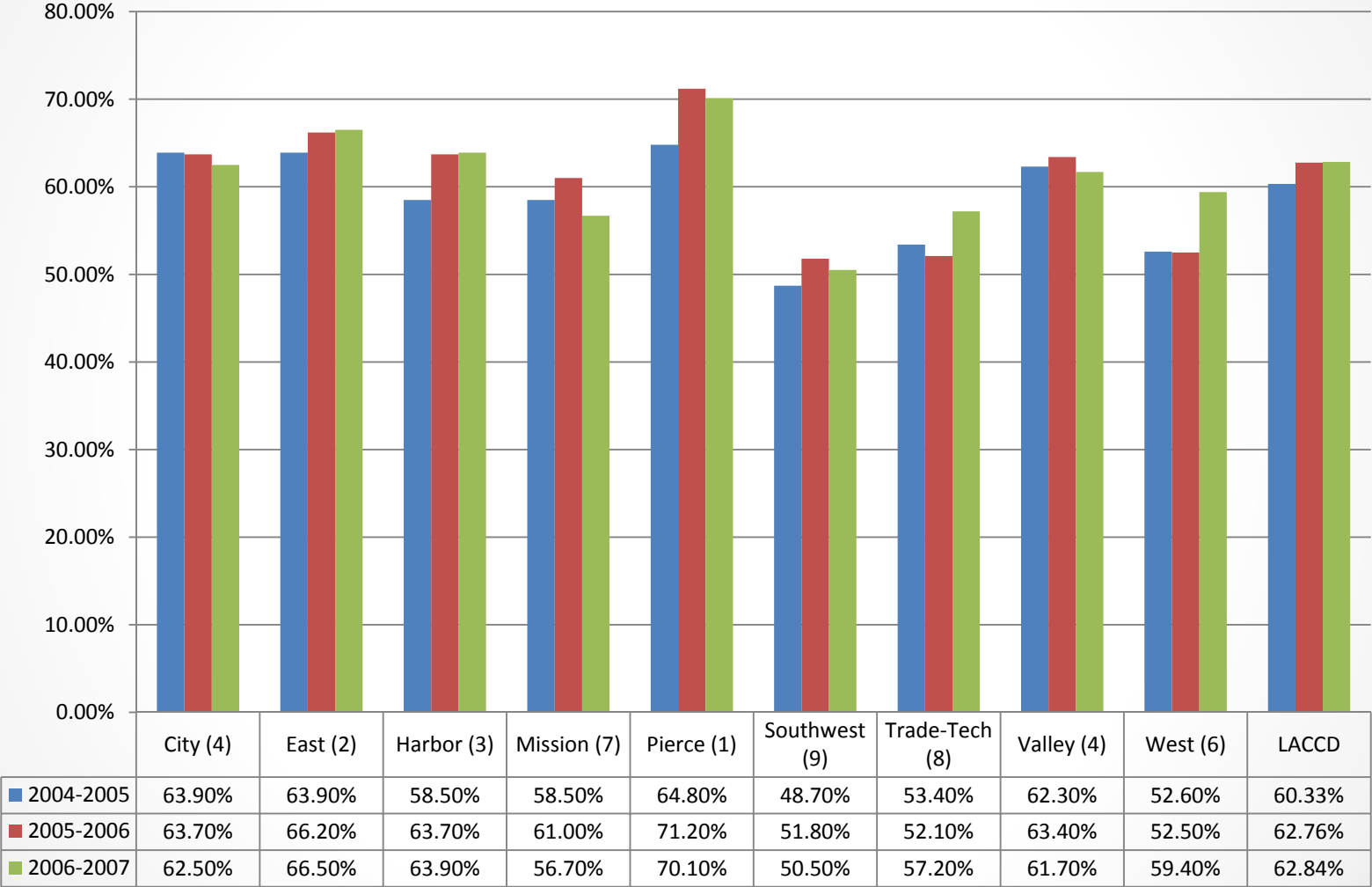


30 Units by College: Prepared

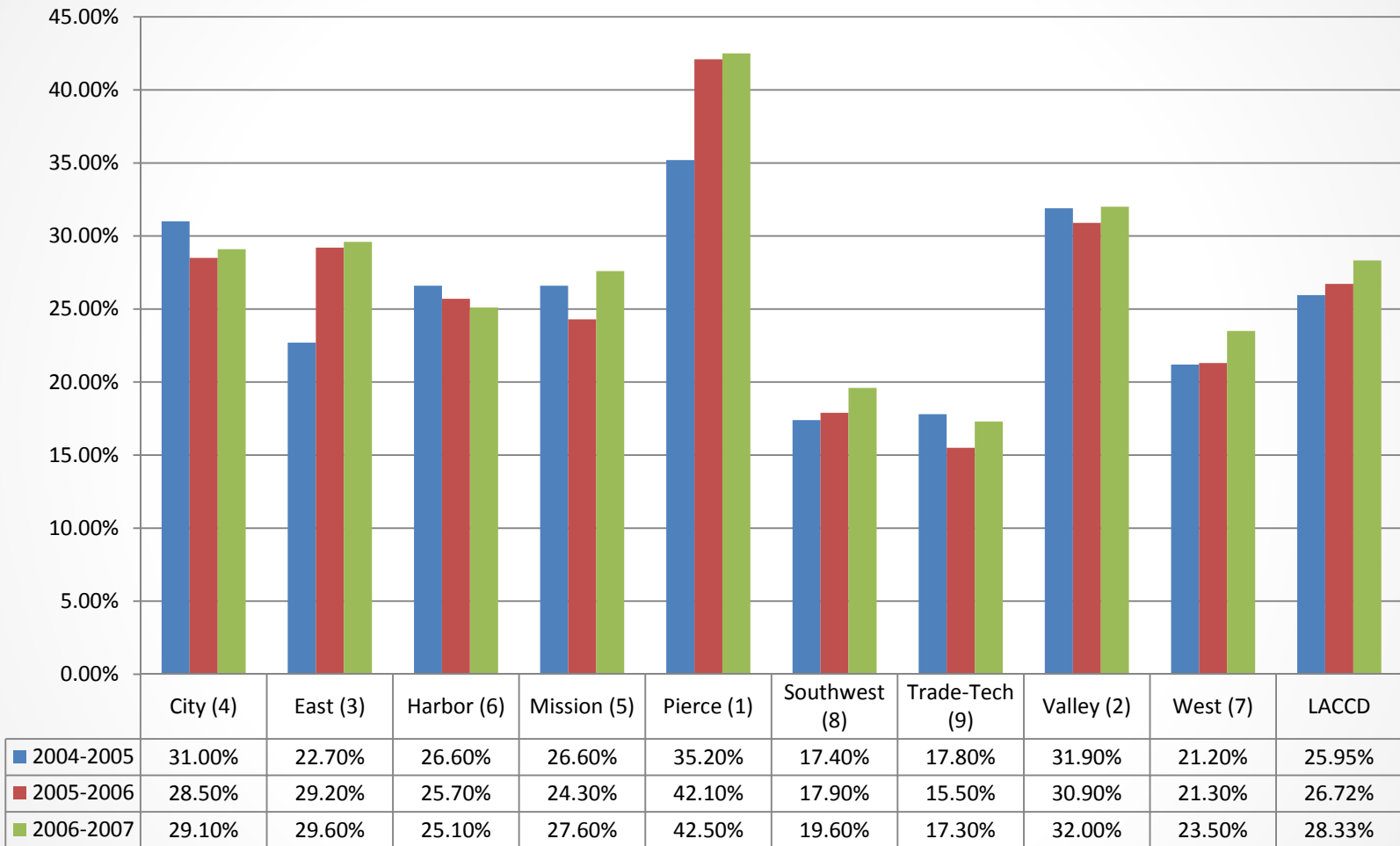


■ 2004-2005	52.30%	63.20%	66.10%	54.20%	69.20%	45.20%	34.40%	67.10%	52.60%	62.63%
■ 2005-2006	50.80%	62.90%	66.20%	68.00%	69.50%	44.40%	60.00%	66.70%	53.20%	63.55%
■ 2006-2007	55.10%	62.50%	65.30%	62.40%	69.10%	48.10%	54.10%	65.90%	54.10%	63.35%

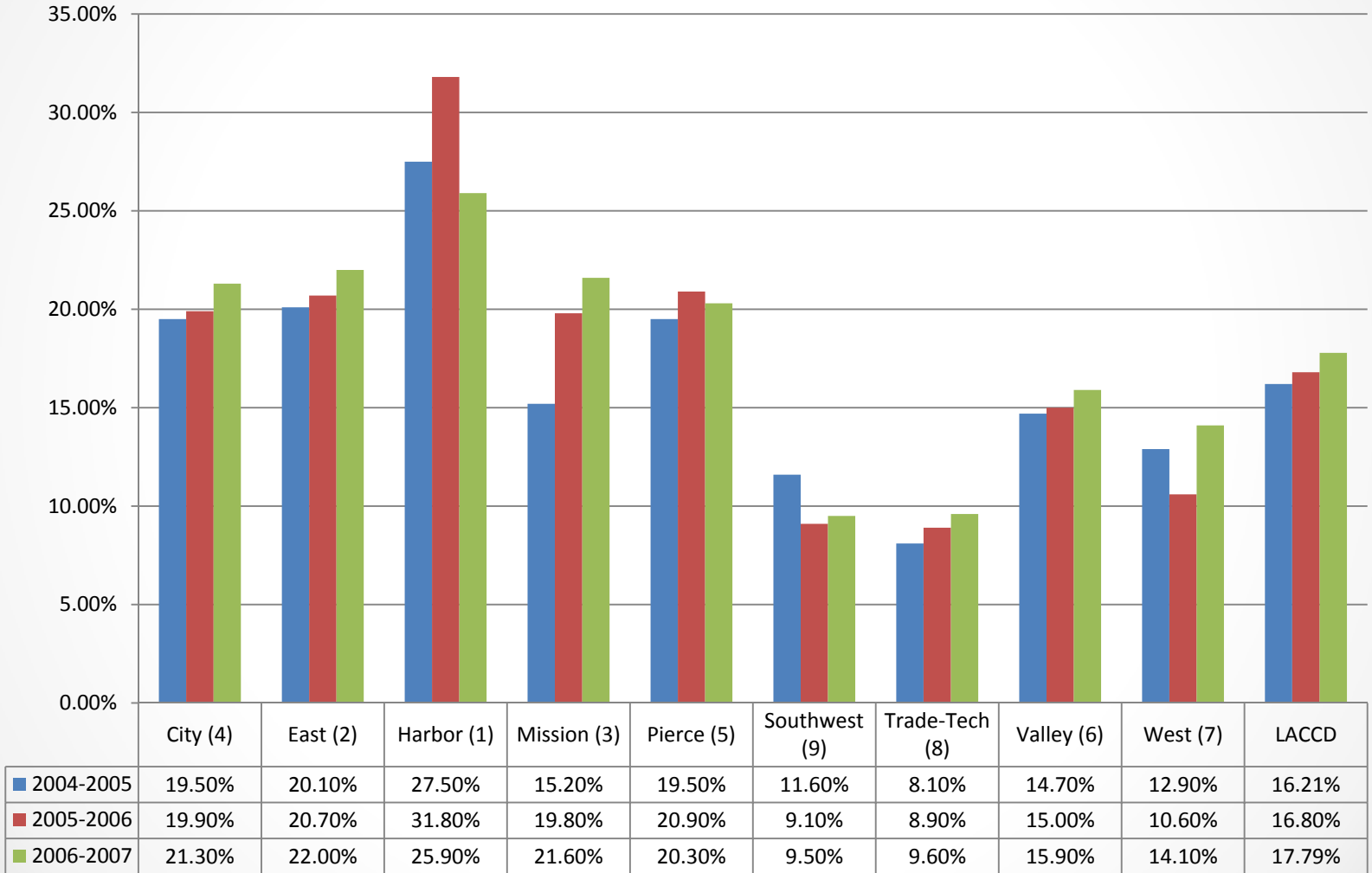
30 Units by College: Unprepared



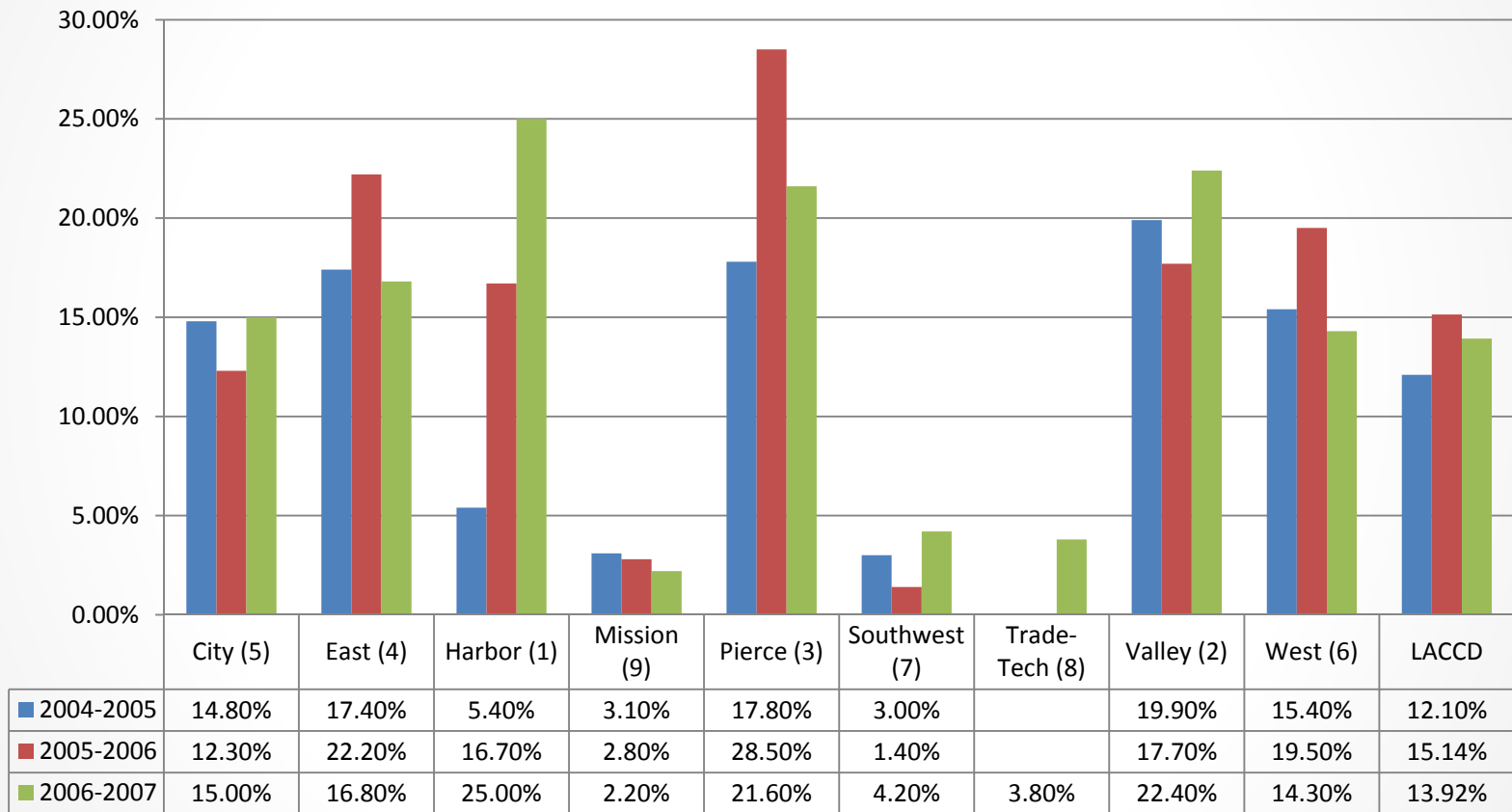
Remedial Progress by College: English



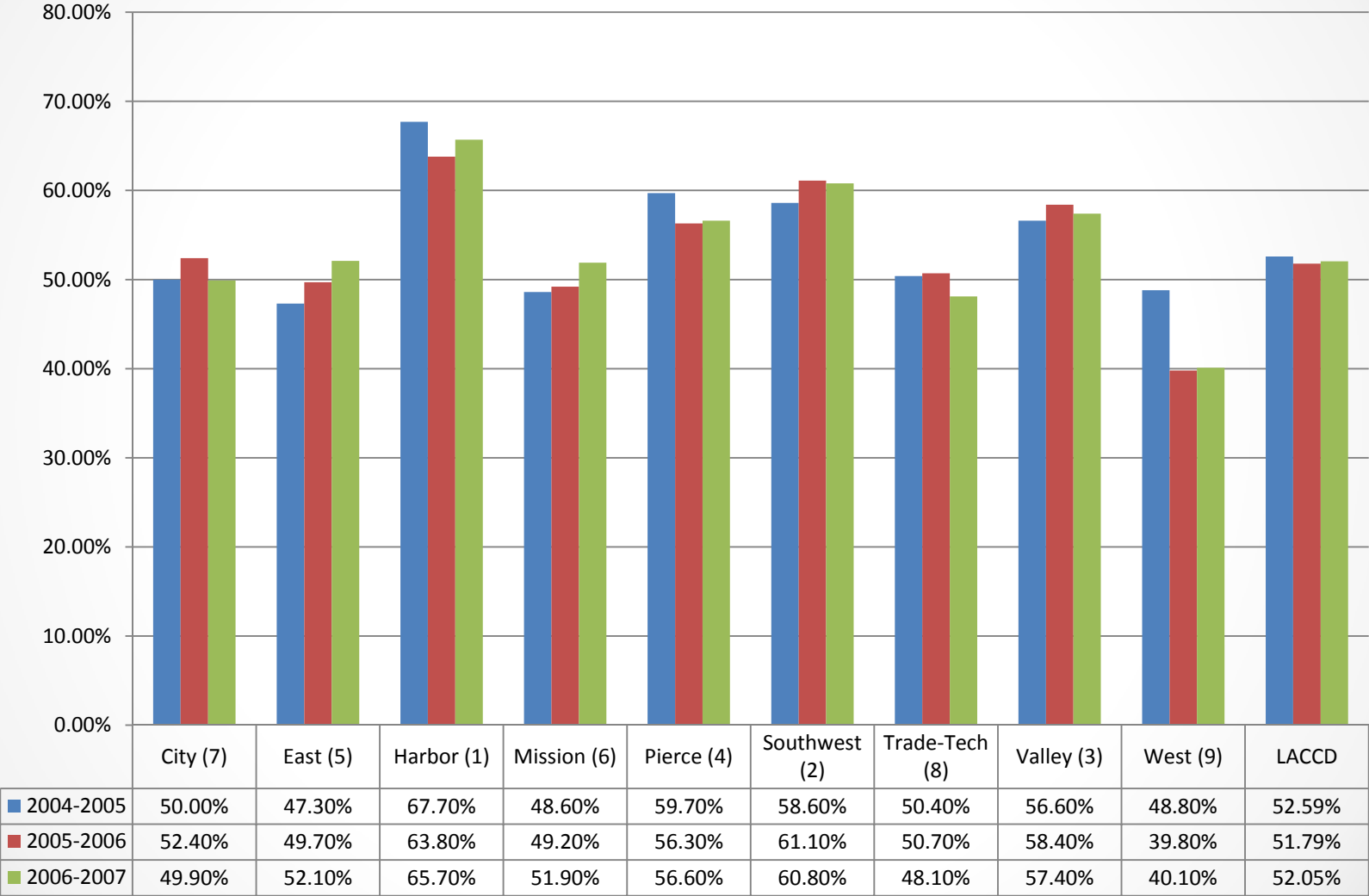
Remedial Progress by College: Math



Remedial Progress by College: ESL



CTE Completion by College



CDCP Rate by College

